



## *New From Evan Designs*

### *Welding/Haunting LED Kit*



Welding is a common sight in Railway repair shops, industry, automotive workshops, and military installations. Inexpensively add a lively welding scene to your Diorama! Also

consider using the welding pack to add an eerie effect to abandoned buildings! Welding Pack is a combination of 3 LEDs: 2 Flashing White and 1 Solid Blue. The secret to the welding effect is the very different flash rates of the LEDs, giving a realistically random effect. As with all other Evan Designs LEDs, all lights are fully assembled with

necessary components for DC 5-12 Volt operation or AC/DC/DCC 5-19 Volt operation. There is no circuit board needed.

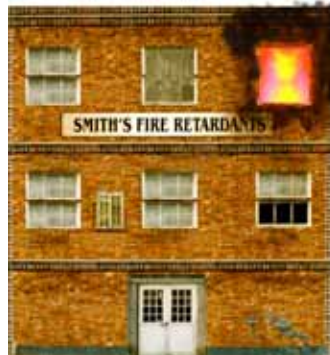
***Sold as a Pack of 3 lights.***

***Fully Assembled***

(DC- Battery) 6.00, (Universal Power) 9.00

---

### *Fire LED Kit*



Add a fire to your Model Train Layout or to your Fire or Police Diorama. The Fire Pack is a combination of 3 LEDs: 1 Flashing Red, 1 Flashing Yellow and 1 Solid Orange. The secret to the fire effect is the very different flash rates of the 3 LEDs, giving a realistically random effect. To make a campfire, trash fire, brush fire, or other small fire, we suggest the 3mm fire option. For structure fires, use 2 or more 5mm

Fires. Also consider using fire for the firebox on your steam locomotive. Or for a warm fire in the hearth in your model buildings.

As with all other Evan Designs LEDs, all lights are fully assembled with necessary components for DC 5-12 Volt operation or AC/DC/DCC 5-19 Volt operation. There is no circuit board needed for this kit.

***Sold as a pack of 3 lights.***

***Fully Assembled***

(DC- Battery) 6.00, (Universal Power) 9.00